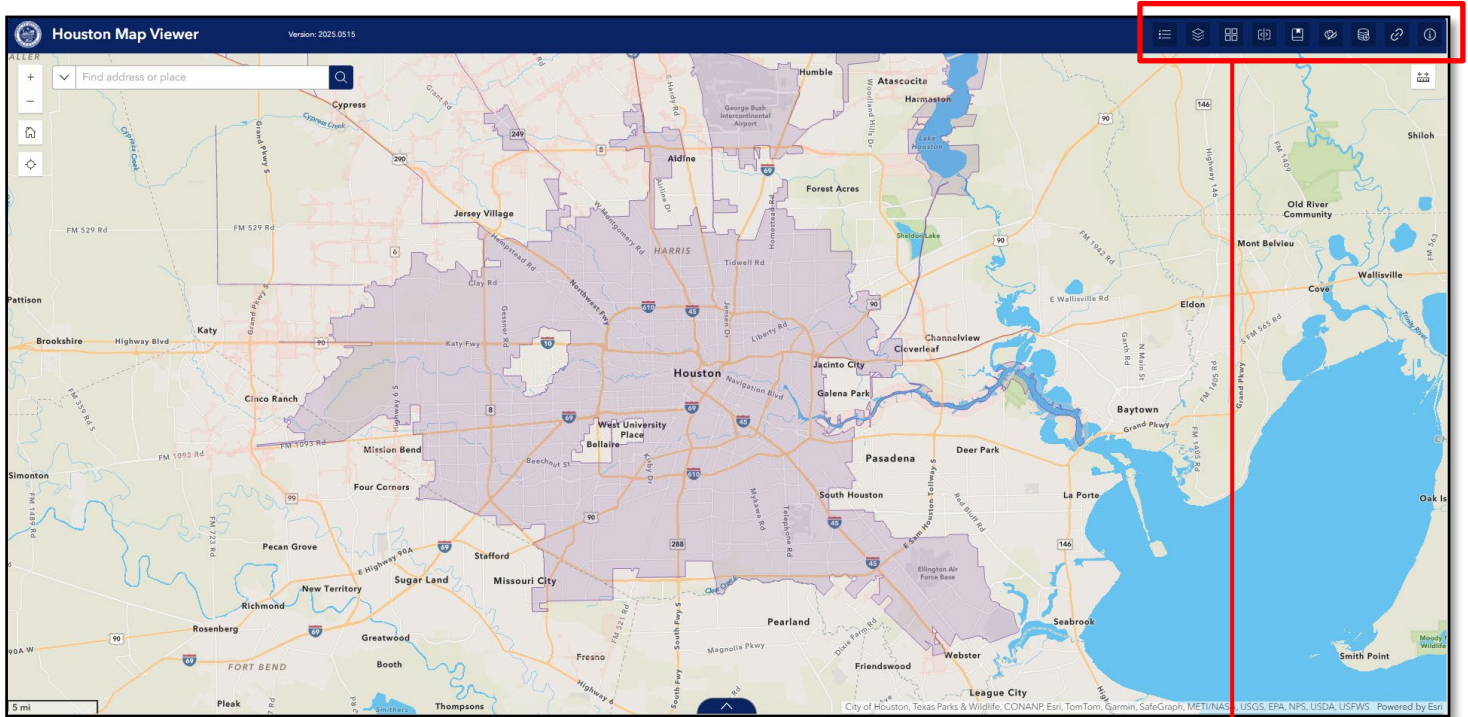


City of Houston Map Viewer Guide

Step-by-Step Guide to Viewing Property and Planning Information

Step 1: Open Map Viewer

Visit the website <https://experience.arcgis.com/experience/024f52f00e214e8691463ecb84dca725> and wait for the map to fully load. You'll see the tools (called "widgets") in the upper right corner.



Legend: Displays the symbols of visible layers

Basemap Gallery: 20+ basemaps to choose from

Bookmark: Creates shortcuts to places on a map

Add Data: Enables you to add data to the map

About: Additional map info

App Links: Links to other map apps

Measure tool: Measure distances and areas

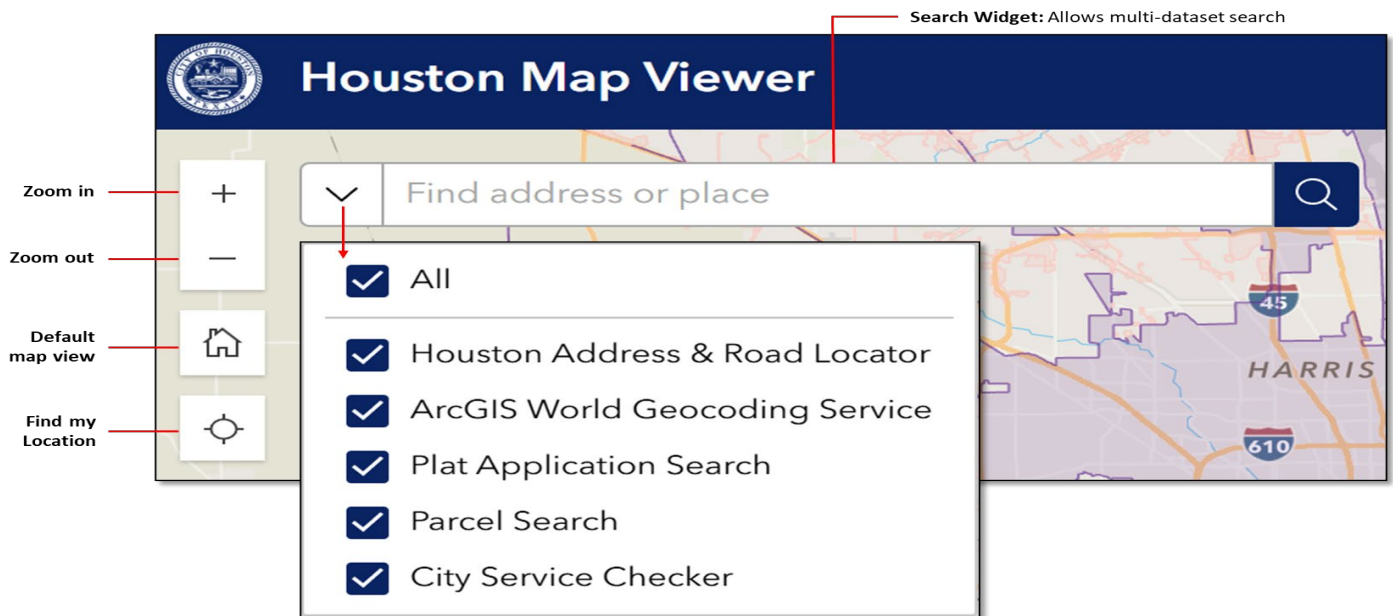
Draw: Draws basic graphics and text on the map

Swipe: Compares layers

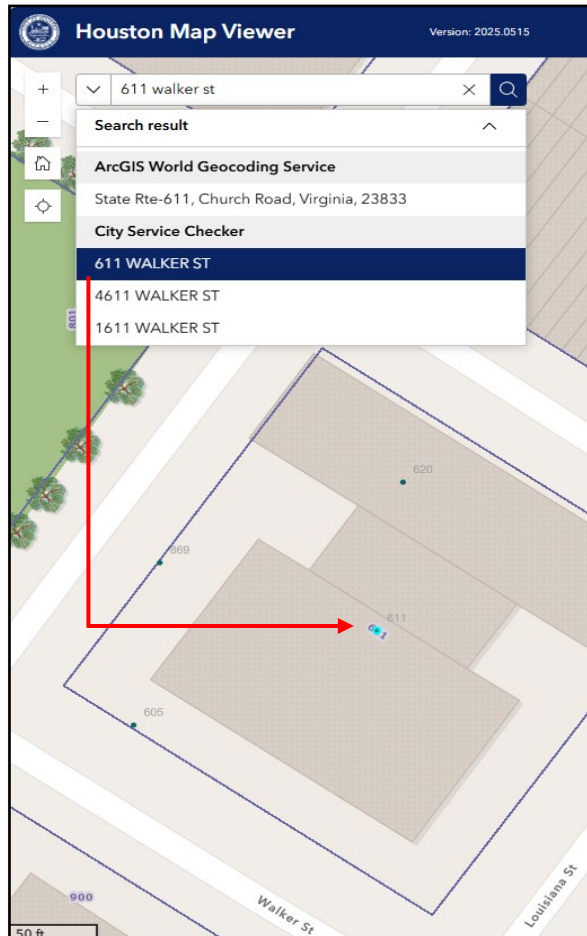
Layer List: Turns on/off layers

Step 2: Search for Your Property

Use the search bar in the top left corner. Make sure the necessary data sets are selected from the drop-down arrow.

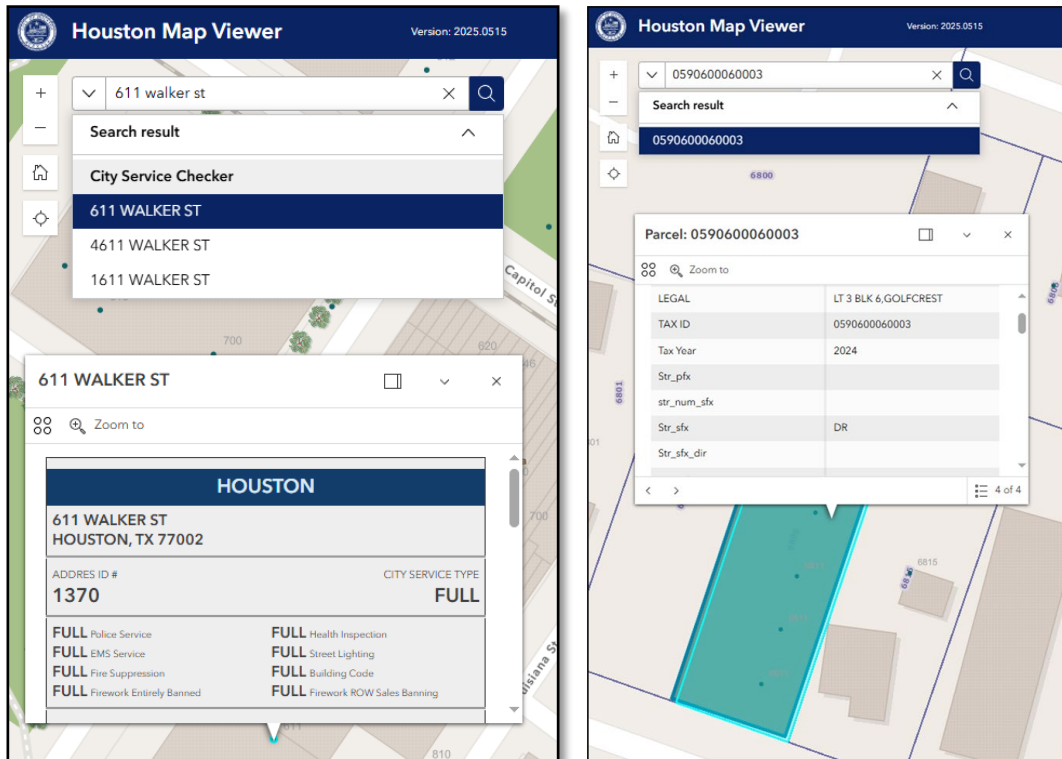


Next, enter your street address or HCAD number and hit enter. Allow a few seconds for the drop down of results to appear. Select your address from the dropdown list and the map will automatically go to the location.

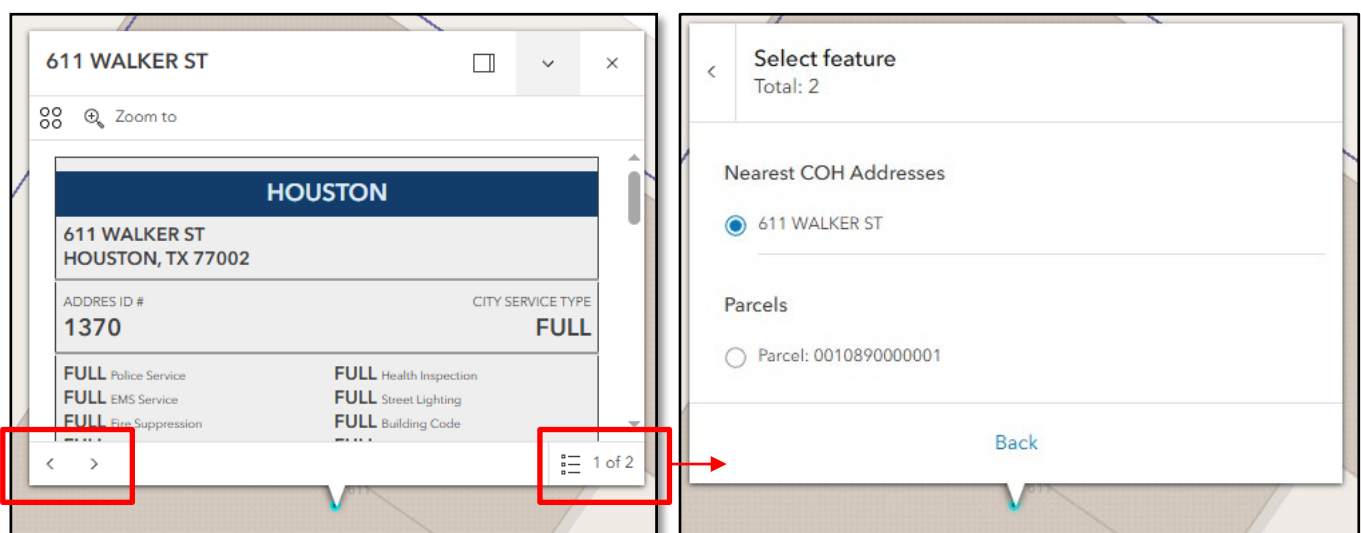


Step 3: Review Your Property Information

Once the map zooms to your property, click on it to see details like platting status, HCAD information, Council District, and more.

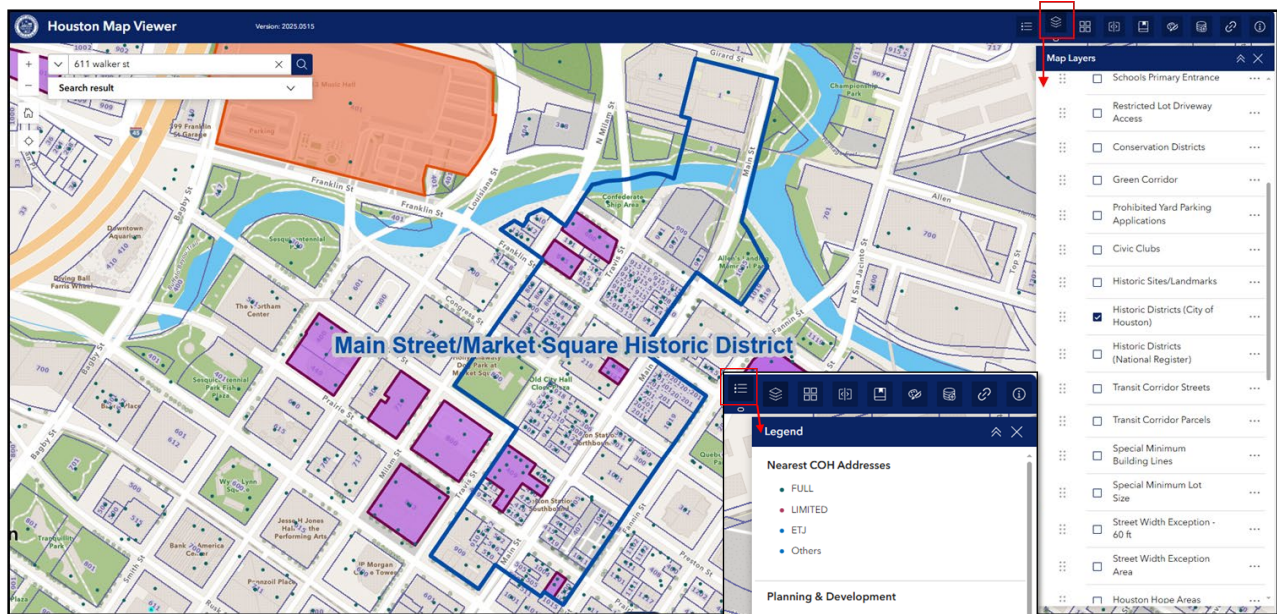


If multiple layers are turned on and a location is selected where there are multiple features, pop-up information for each layer is available to view using the left and right arrows on the bottom left corner of the pop-up. You can also view a list of all layers by clicking the list icon at bottom right corner, and then you can select the pop-up info you want to view.



Step 4: Turn Layers On or Off

Click the 'Layers' icon (stacked squares) to open the layer menu. From here, you can check boxes to toggle layers like MLS, Historic Districts, Council Districts, and more.



Step 5: Use the Legend

The legend explains the colors and symbols for each layer. Click the 'Legend' icon to understand what you're seeing.

Step 6: Check for Protections or Programs

Explore if your property falls within an MLS area, Historic District, Walkable Place, or Building Line area by enabling those layers.

Step 7: Take Notes or Print a Screenshot

Use your device's screenshot tool or print function to save or print a copy of what you see for your records or to discuss with City staff.

Useful Map Layers & What They Show

Layer	What It Shows	Why It Matters
Plat Boundaries	Lot lines and recorded plats	Know if your property is part of a subdivision
Minimum Lot Size / Building Line	MLS protections and building line overlays	Understand development restrictions
Historic Overlays	Historic districts and landmarks	Determine if historic guidelines apply
Planning datasets	TIRZ, Walkable Places, TODs	Learn about neighborhood planning efforts
Council Districts	Political district boundaries	Identify your Council Member

Need help? Contact the Planning & Development Department at (832) 393-6600.